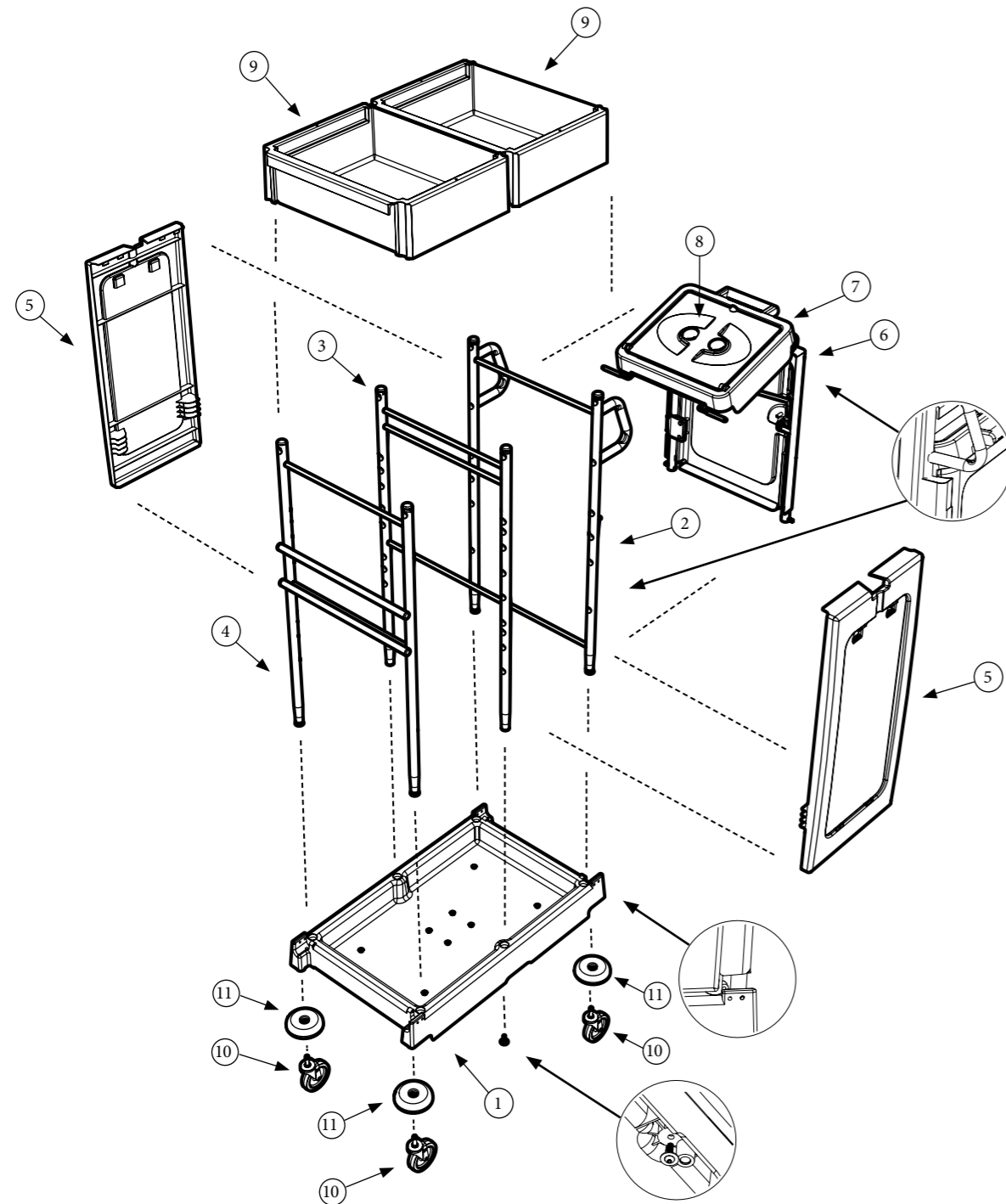


Exploded Spare PM-11S

Numatic



| Number | Description | Part Number | Quantity |
|--------|---|-------------|----------|
| 1 | Large black refo trolley base | 910010 | 1 |
| 2 | Upright frame weld assembly stainless (front) | 908631 | 1 |
| 3 | Upright frame weld assembly stainless (central) | 908641 | 1 |
| 4 | Rear upright frame welded assembly (stainless steel) | 908643 | 1 |
| 5 | Side panel black refo moulding | 910013 | 2 |
| 6 | Rear door black refo moulding | 910017 | 1 |
| 7 | Bag securing black refo moulding | 910015 | 1 |
| 8 | Compact lid moulding (grey Ral 7042) | 908611 | 1 |
| 9 | Clip on black refo plain tray moulding | 910012 | 2 |
| 10 | Option A Castor - 4 Inch stem fitting castor | 628425 | 4 |
| | Option B Castor - 5 Inch stem fitting castor | 629766 | 4 |
| | Option C Castor - 200mm Grey PU castor | 901813 | 4 |
| 11 | Buffer moulding - Optional | 227479 | 4 |
| 12 | 120-Litre grey waste bags (roll of 10 - 700mm x 1100mm) - Optional | 908229 | 1 |

Castor Options:-



Option 'A' Castor
4 Inch Stem Fitting Castor
Part No 628425



Option 'B' Castor
5 Inch Stem Fitting Castor
Part No 629766



Option 'C' Castor
200mm Grey PU Castor
Part No 901813

| | |
|----------|-----|
| Revision | A01 |
|----------|-----|

Numatic

Numatic International
Limited,
Chard, Somerset, TA20 2GB
Telephone: 01460 68600
Fax: 01460 68458

UNITED KINGDOM: www.numatic.com
NETHERLANDS: www.numatic.nl
PORTUGAL: www.numatic.pt

GERMANY: www.numatic.de
SWITZERLAND: www.numatic.ch
SPAIN: www.numatic.es

FRANCE: www.numatic.fr
SOUTH AFRICA: www.numatic.co.za

Numatic.com

Specification subject to change without prior notice
www.numatic.com © Numatic International Limited

MED-001015 04/21 (A01)